

The Benton

2277 Square Feet

Total Width: 57'-8"
Total Depth: 36'-0"



2 Story
4 Bedrooms
2 1/2 Baths

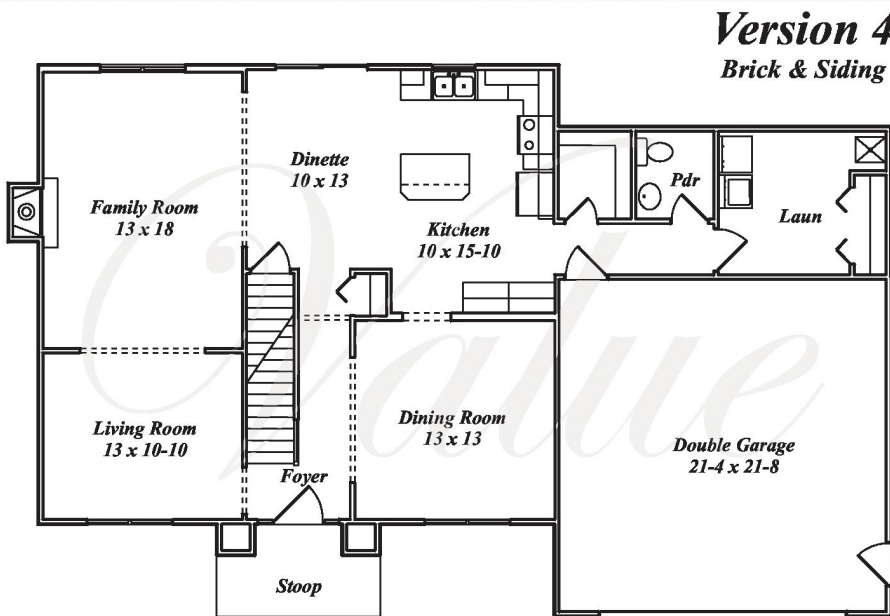
Features

Traditional center hall plan with dining & living rooms

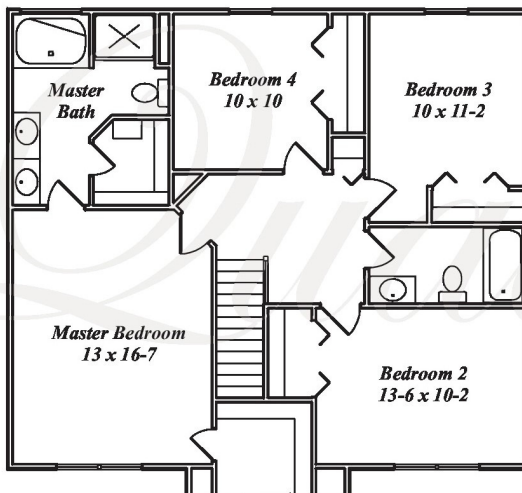
Open kitchen with plenty of work space, an island & pantry

Oversized first floor laundry room

Master suite features 2 walk-in closets



Base First Floor
1236 Square Feet



Base Second Floor
1041 Square Feet



Office/Model Home:
10532 Cleveland Avenue NW
Uniontown, OH 44685
330-704-2174

www.dutchlegacyhomes.com

This brochure is for illustrative purposes only and is not part of any legally binding contract. Due to continually updated building codes and design improvements, dimensions may vary slightly. See sales associate for current floor plan dimensions.

Note: This plan is copyrighted by Dutch Legacy Homes. Federal copyright law prohibits any unauthorized use of this plan or any part thereof. Violators of the copyright law are subject to prosecution to the extent of the law.

The Benton

2277 Square Feet



Office/Model Home:
10532 Cleveland Avenue NW
Uniontown, OH 44685
330-704-2174
dutchlegacyhomes.com



Version 1

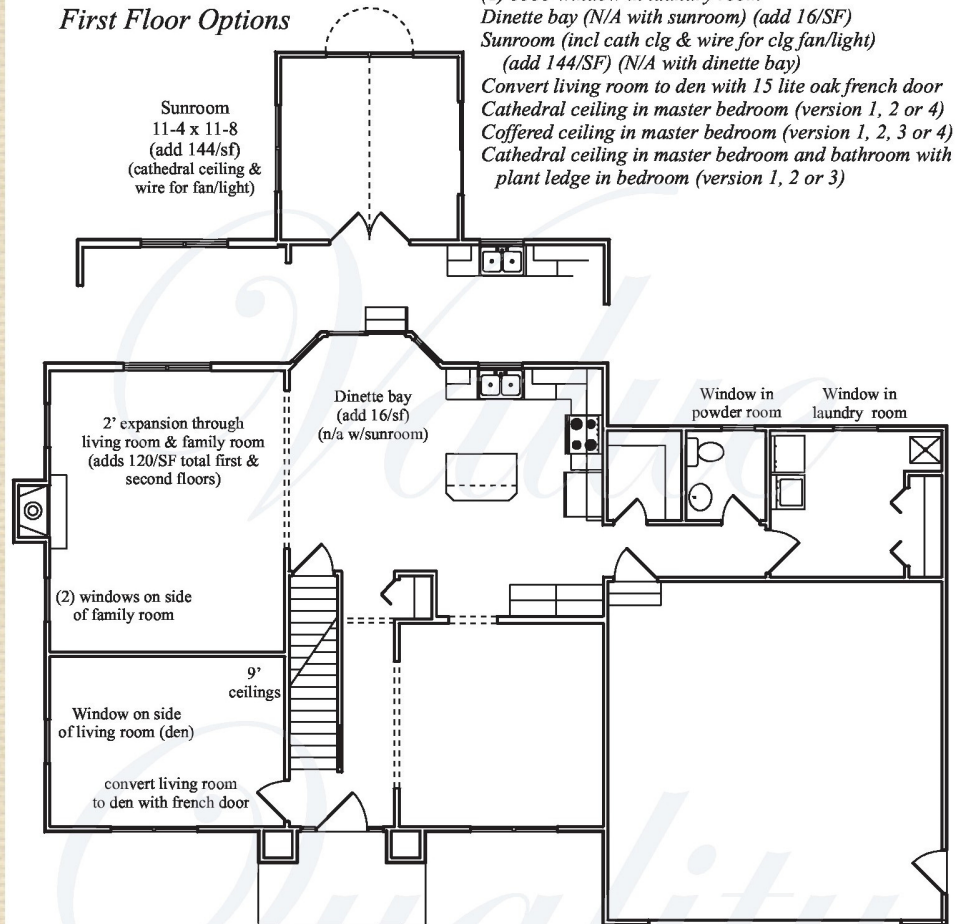


Version 2



Version 3

First Floor Options

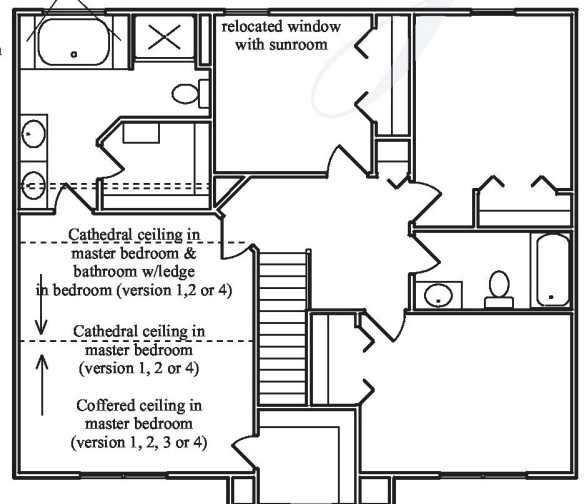


Options

- 9' ceilings on first floor (including garage)
- 2' expansion through living room, family room and master suite (add 120/SF total)
- (2) 3371 windows on side of family room
- (1) 3371 window on side of living room
- (1) 2535 window in powder room
- (1) 3335 window in laundry room
- Dinette bay (N/A with sunroom) (add 16/SF)
- Sunroom (incl cath clg & wire for clg fan/light) (add 144/SF) (N/A with dinette bay)
- Convert living room to den with 15 lite oak french door
- Cathedral ceiling in master bedroom (version 1, 2 or 4)
- Coffered ceiling in master bedroom (version 1, 2, 3 or 4)
- Cathedral ceiling in master bedroom and bathroom with plant ledge in bedroom (version 1, 2 or 3)

Oak ledges
(with 2' expansion)

2' expansion through master bedroom & bathroom
(adds 120/SF total first & second floors)



Second Floor Options